

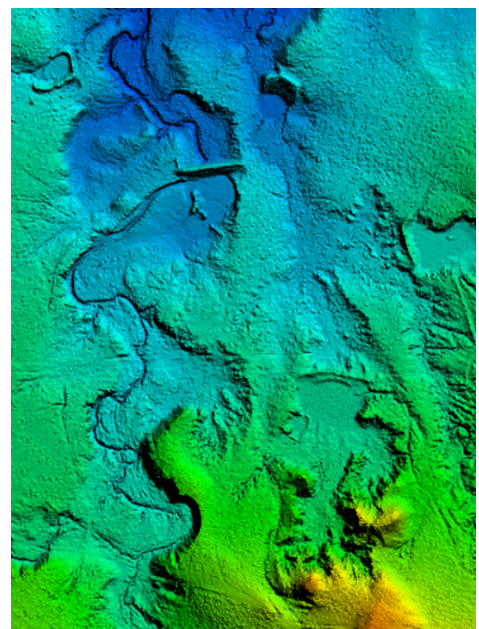
# Supporting ALTA Surveys for Solar Farms with Aerial Mapping Data



**A**merican Land Title Association (ALTA) surveys are a critical step in major construction projects and the sale of land. When solar farms are involved, precise, accurate geospatial data representing the earth's surface is a particularly valuable tool in the ALTA process. Aerial imagery and lidar data enable collection of planimetric data representing ground features, such as buildings and powerlines, and topographic data depicting the earth's elevation.

Surdex has completed several mapping projects for solar farm ALTA surveys, totaling over 350 square miles in 6 different states. These projects typically include high-resolution aerial imagery and dense lidar acquisition for the production of 5cm resolution digital orthoimagery, Digital Elevation Models (DEMs), planimetric data and topographic contours. We have also provided thermal imaging and subsurface drain tile mapping.

Our cost effective dual-sensor mount enables simultaneous capture of the imagery and lidar data, resulting in efficient, timely acquisition. This method of acquisition also ensures that features in both datasets will not vary due to temporal differences that may occur with a split acquisition.





# Supporting ALTA Surveys for Solar Farms with Aerial Mapping Data



These rich geospatial datasets enable more efficient and precise completion of ALTA surveys, ensuring solar farm projects progress smoothly.

**Contact us to find out more or to initiate a project.**

## CONTACT

Tim Bohn, CP, PMP • [timb@surdex.com](mailto:timb@surdex.com)  
OFFICE 636-368-4456 • MOBILE 314-952-2617

## FIND US ON LINKEDIN

Tim Bohn  
Surdex Corporation



**Your Strategic Geospatial Resource**

[surdex.com](http://surdex.com) • 636-368-4400 • [info@surdex.com](mailto:info@surdex.com)