

Disaster Mapping



State and Local Entities: You Are Eligible to Get Rapid Disaster Mapping at the Lowest Federal Rates



Displaced bridge caused by flooding in Southeastern Nebraska

Suredex is an Approved Vendor for the GSA Disaster Purchasing Program

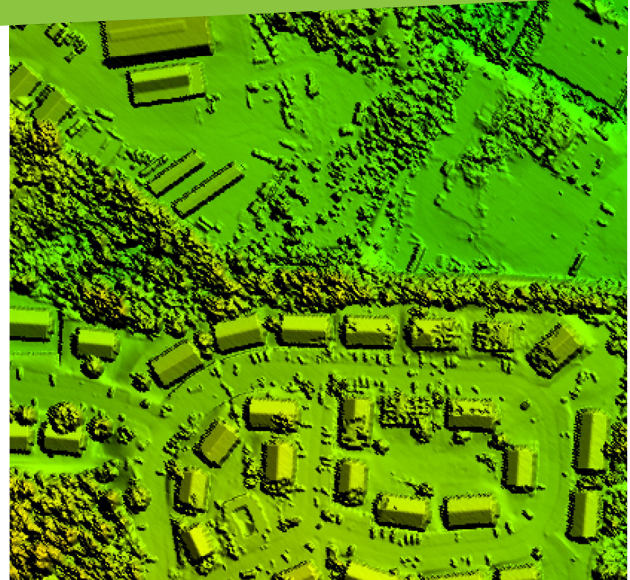
GSA Disaster Purchasing Program

During times of FEMA-declared disasters, state and local entities can leverage the low rates the federal government receives for disaster response services. This process is extremely quick, and public entities—even small municipalities—can rapidly initiate disaster response at the lowest rates possible.

The Program

This program is called the GSA Disaster Purchasing Program. State and local governments can purchase equipment and services to support Presidentially declared natural or man-made disasters.

State and Local Entities: You Are Eligible to Get Rapid Disaster Mapping at the Lowest Federal Rates



Left: Orthoimagery of Jefferson City tornado damage. Right: Lidar intensity image of Jefferson City tornado damage.

Specialized in Expedited Disaster Mapping

Surdex has a specialized rapid response program for disaster mapping and extensive experience with fast-tracking disasters such as floods, tornados and hurricanes.

Who Is Eligible?

Eligible entities include any state, local, regional, or tribal government, or any instrumentality (including any educational agency or institution of higher education). Entities that clearly fall under the definition of state and local government do not need to request an eligibility determination.

Professional Engineering Services Covered

Surdex holds a GSA contract and is an approved vendor for the GSA Disaster Purchasing Program. As a photogrammetric engineering firm, this contract is applicable to our digital orthoimagery, lidar, and digital mapping services.

GSA contract number	47QTCA18D00J5
Special Item Number (SIN)	541370GEO Earth Observation Solutions
GSA Disaster Purchasing Program	Approved vendor



Contract Holder



Your Strategic Geospatial Resource

surdex.com • 636-368-4400 • info@surdex.com